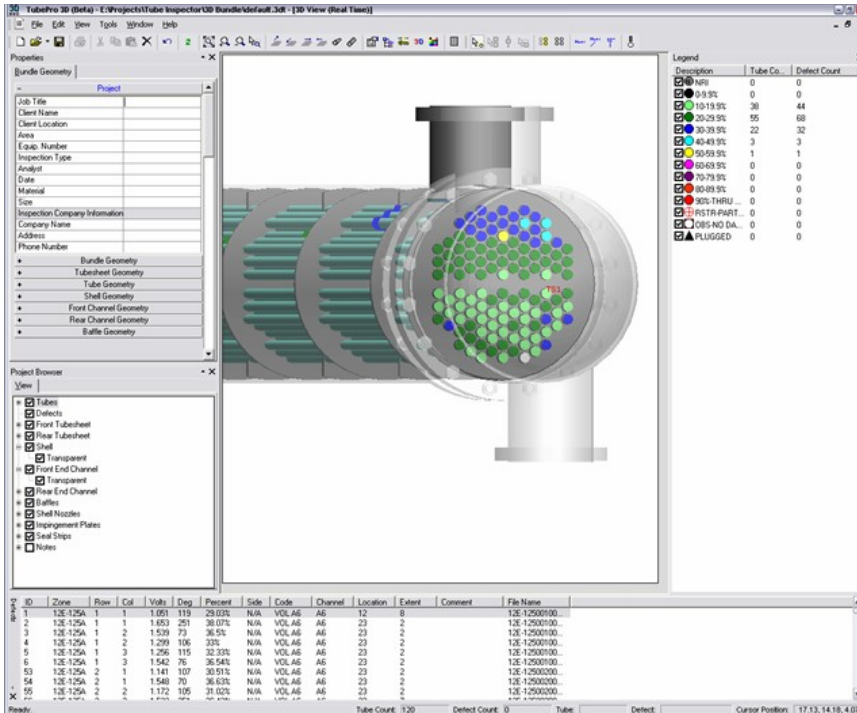


TubePro 3D Bundle Visualization

TubePro 3D allows you to view a bundle with its defects in 3D with a single click. By entering a very small amount of data you can create a bundle model of virtually any shell and tube heat exchanger, condenser or air-cooler.



You have full control over items such as baffle configuration, nozzle locations and sizes, front and rear cover dimensions and configuration. Seal-strips are added with a single click and are easily located and dimensioned. Parts can be turned on or made transparent with a single click. 3D notes can be added and you can orient the model how you want in order to get the best possible view.

3D Defects

TubePro 3D can import multiple defect data points for each tube. You have full control over what defects you want to view and you can also turn off individual tubes, rows or columns of tubes in order to be able to focus on a specific area of interest in the bundle.

More Information

Visit **Inspection Software Systems** website www.ISSapps.com for more information or to request a trial version of TubePro.

Phone: (925)827-9689
Email: Sales@ISSapps.com